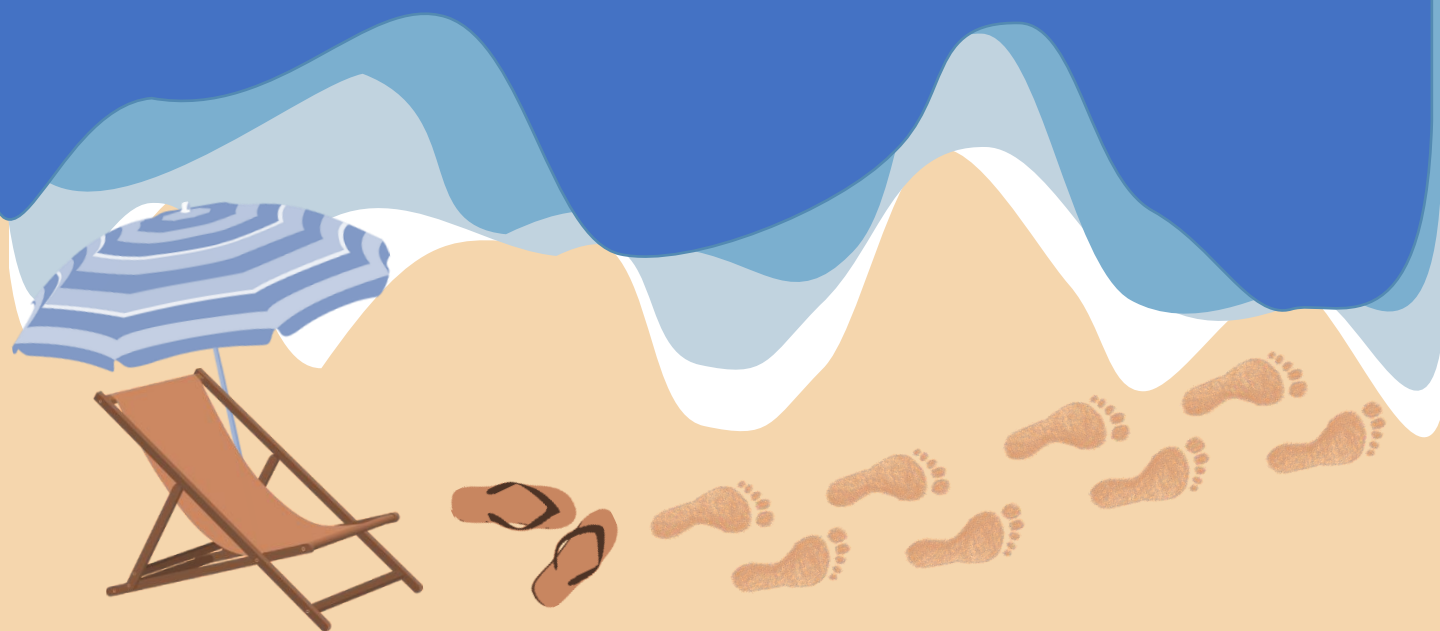


# 2025 Summer Courses

IB IAL GCE(A-Level)  
GCSE IGCSE



A-Square Education Centre  
賢坊教育中心



23800868 ☎ 98564341  asquare.edu.hk  太子西洋菜北街155號嘉康中心5字樓全層

# IGCSE / GCSE

- Week 1 23 - 28 Jun, 2025
- Week 2 30 - 5 Jul, 2025
- Week 3 7 - 12 Jul, 2025
- Week 4 14 - 18 Jul, 2025

- Week 5 21 - 26 Jul, 2025
- Week 6 28 Jul - 2 Aug, 2025
- Week 7 4 - 9 Aug, 2025
- Week 8 11 - 16 Aug, 2025

## Language & Literature

HK\$700 per session (1.5hrs)

|           |  |   |             |            |
|-----------|--|---|-------------|------------|
| Weeks 5-6 | IGCSE Cambridge English First Language | 22/7 (Tue), 24/7 (Thu), 26/7 (Sat)<br>29/7 (Tue), 31/7 (Thu), 2/8 (Sat) | 10:00-11:30 | 6 sessions |
| Weeks 5-5 | IGCSE English as a Second Language     | 22/7 (Tue), 24/7 (Thu), 26/7 (Sat)<br>29/7 (Tue), 31/7 (Thu), 2/8 (Sat) | 13:30-15:00 | 6 sessions |

## Mathematics & Science

HK\$670 per session (1.5hrs)

|           |           |  |             |             |
|-----------|-----------|--|-------------|-------------|
| Weeks 1-7 | Yr10 Math | 24/6 (Tue), 27/6 (Fri), 4/7 (Fri),<br>8/7(Tue), 11/7(Fri), 15/7(Tue),<br>18/7 (Fri), 22/7(Tue), 25/7(Fri),<br>29/7(Tue), 1/8 (Fri), 5/8(Tue) | 12:00-13:30 | 12 sessions |
| Weeks 1-7 | Yr10 Phys | 24/6 (Tue), 27/6 (Fri), 4/7 (Fri),<br>8/7(Tue), 11/7(Fri), 15/7(Tue),<br>18/7 (Fri), 22/7(Tue), 25/7(Fri),<br>29/7(Tue), 1/8 (Fri), 5/8(Tue) | 13:30-15:00 | 12 sessions |
| Weeks 1-4 | Yr10 Chem | To be confirmed  |             |             |
| Weeks 2-7 | Yr10 Bio  | 2/7(Wed), 3/7(Thu), 9/7(Wed)<br>10/7(Thu), 16/7(Wed), 17/7(Thu)<br>23/7(Wed), 24/7(Thu), 30/7(Wed)<br>31/7(Thu), 6/8(Wed), 7/8(Thu)          | 13:00-14:30 | 12 sessions |
| Weeks 1-7 | Yr11 Math | 24/6 (Tue), 27/6 (Fri), 4/7 (Fri),<br>8/7(Tue), 11/7(Fri), 15/7(Tue),<br>18/7 (Fri), 22/7(Tue), 25/7(Fri),<br>29/7(Tue), 1/8 (Fri), 5/8(Tue) | 15:00-16:30 | 12 sessions |
| Weeks 1-7 | Yr11 Phys | 25/6(Wed), 26/6 (Thu), 7/2(Wed),<br>3/7(Thu), 9/7(Wed), 10/7(Thu),<br>16/7(Wed), 17/7(Thu), 23/7(Wed),<br>24/7(Thu), 30/7(Wed), 31/7(Thu)    | 13:30-15:00 | 12 sessions |
| Weeks 5-7 | Yr11 Chem | To be confirmed  |             |             |
| Weeks 2-7 | Yr11 Bio  | 2/7(Wed), 3/7(Thu), 9/7(Wed)<br>10/7(Thu), 16/7(Wed), 17/7(Thu)<br>23/7(Wed), 24/7(Thu), 30/7(Wed)<br>31/7(Thu), 6/8(Wed), 7/8(Thu)          | 14:30-16:00 | 12 sessions |

○ For classes of other levels or subjects not listed here, please contact us for arrangement.

# IGCSE / GCSE

- Week 1 23 - 28 Jun, 2025
- Week 2 30 - 5 Jul, 2025
- Week 3 7 - 12 Jul, 2025
- Week 4 14 - 18 Jul, 2025

- Week 5 21 - 26 Jul, 2025
- Week 6 28 Jul - 2 Aug, 2025
- Week 7 4 - 9 Aug, 2025
- Week 8 11 - 16 Aug, 2025

## Economics

HK\$670 per session (1.5hrs)

|           |            |   |             |             |
|-----------|------------|---|-------------|-------------|
| Weeks 2-8 | Yr 10 Econ | 4/7 (Fri), 8/7 (Tue), 11/7 (Fri), 15/7 (Tue), 18/7 (Fri), 22/7 (Tue), 25/7 (Fri), 29/7 (Tue), 1/8 (Fri), 5/8 (Tue), 8/8 (Fri), 12/8 (Tue) | 13:30-15:00 | 12 sessions |
| Weeks 2-8 | Yr 11 Econ | 30/6 (Mon), 2/7 (Wed), 7/7 (Mon), 9/7 (Wed), 14/7 (Mon), 16/7 (Wed), 21/7 (Mon), 28/7 (Mon), 30/7 (Wed), 4/8 (Mon), 6/8 (Wed), 11/8 (Mon) | 15:00-16:30 | 12 sessions |

## Computer Science

HK\$670 per session (1.5hrs)

|           |                        |  |             |             |
|-----------|------------------------|--|-------------|-------------|
| Weeks 1-7 | Yr 10 Computer Science | 23/6 (Mon), 25/6 (Wed), 30/6 (Mon), 2/7 (Wed), 7/7 (Mon), 9/7 (Wed), 14/7 (Mon), 16/7 (Wed), 21/7 (Mon), 28/7 (Mon), 30/7 (Wed), 4/8 (Mon) | 14:00-15:30 | 12 sessions |
|-----------|------------------------|--|-------------|-------------|

## Computer Science - Python Programming

HK\$670 per session (1.5hrs)

|           |                    |  |             |            |
|-----------|--------------------|--|-------------|------------|
| Weeks 4-8 | Python Programming | 14/7 (Mon), 16/7 (Wed), 21/7 (Mon), 28/7 (Mon), 30/7 (Wed), 4/8 (Mon), 6/8 (Wed), 11/8 (Mon), 13/8 (Wed) | 12:30-14:00 | 9 sessions |
|-----------|--------------------|--|-------------|------------|

## Pre-IGCSE / IBMYP

HK\$430 per session (1 hrs)

|           |           |   |             |            |
|-----------|-----------|---|-------------|------------|
| Weeks 1-4 | Yr 7 Math | 24/6 (Tue), 26/6 (Thu), 3/7 (Thu), 8/7 (Tue), 10/7 (Thu), 15/7 (Tue)  | 12:30-13:30 | 6 sessions |
| Weeks 4-7 | Yr 8 Math | 17/7 (Thu), 22/7 (Tue), 24/7 (Thu), 29/7 (Tue), 31/7 (Thu), 5/8 (Tue) | 12:30-13:30 | 6 sessions |
| Weeks 5-8 | Yr 9 Math | 24/7 (Thu), 29/7 (Tue), 31/7 (Thu), 5/8 (Tue), 7/8 (Thu), 12/8 (Tue)  | 14:00-15:00 | 6 sessions |

○ For classes of other levels or subjects not listed here, please contact us for arrangement.

# IB / IAL/ GCE (A-levels)

- Week 1 23 - 28 Jun, 2025
- Week 2 30 - 5 Jul, 2025
- Week 3 7 - 12 Jul, 2025
- Week 4 14 - 18 Jul, 2025
- Week 5 21 - 26 Jul, 2025
- Week 6 28 Jul - 2 Aug, 2025
- Week 7 4 - 9 Aug, 2025
- Week 8 11 - 16 Aug, 2025

## Mathematics

HK\$710 per session (1.5hrs)

|           |                                    |   |             |                |
|-----------|------------------------------------|---|-------------|----------------|
| Weeks 1-7 | IB Yr12 Math /<br>GCE Math PM1     | 24/6 (Tue), 27/6 (Fri), 4/7 (Fri),<br>8/7(Tue), 11/7(Fri), 15/7(Tue),<br>18/7 (Fri), 22/7(Tue), 25/7(Fri),<br>29/7(Tue),1/8 (Fri), 5/8(Tue) | 12:00-13:30 | 12<br>sessions |
| Weeks 1-6 | GCE Math PM2                       | 25/6(Wed), 26/6 (Thu), 7/2(Wed),<br>3/7(Thu),9/7(Wed),10/7(Thu),<br>16/7(Wed), 17/7(Thu),23/7(Wed),<br>24/7(Thu),30/7(Wed),31/7(Thu)        | 13:30-15:00 | 12<br>sessions |
| Weeks 1-7 | IB Yr13 Math /<br>GCE Further Math | 24/6 (Tue), 27/6 (Fri), 4/7 (Fri),<br>8/7(Tue), 11/7(Fri), 15/7(Tue),<br>18/7 (Fri), 22/7(Tue), 25/7(Fri),<br>29/7(Tue),1/8 (Fri), 5/8(Tue) | 15:00-16:30 | 12<br>sessions |

## Science

HK\$710 per session (1.5hrs)

|           |                               |   |   |             |
|-----------|-------------------------------|---|---|-------------|
| Weeks 1-7 | IB Yr12 Phys /<br>GCE AS Phys | 24/6 (Tue), 27/6 (Fri), 4/7 (Fri),<br>8/7(Tue), 11/7(Fri), 15/7(Tue),<br>18/7 (Fri), 22/7(Tue), 25/7(Fri),<br>29/7(Tue),1/8 (Fri), 5/8(Tue) | 13:30-15:00                                     | 12 sessions |
| Weeks 3-7 | IB Yr12 Chem /<br>GCE AS Chem | 12/7(Sat), 19/7(Sat), 26/7(Sat)<br>12/7(Sat), 19/7(Sat), 26/7(Sat)<br>2/8(Sat), 9/8(Sat)  | ← 13:00-14:30<br>← 16:30-18:00<br>← 16:30-18:00 | 8 sessions  |
| Weeks 2-7 | IB Yr12 Bio /<br>GCE AS Bio   | 2/7(Wed),3/7(Thu),9/7(Wed)<br>10/7(Thu),16/7(Wed),17/7(Thu)<br>23/7(Wed),24/7(Thu),30/7(Wed)<br>31/7(Thu),6/8(Wed), 7/8(Thu)                | 13:00-14:30                                     | 12 sessions |
| Weeks 1-7 | IB Yr13 Phys /<br>GCE AL Phys | 25/6(Wed), 26/6 (Thu), 7/2(Wed),<br>3/7(Thu),9/7(Wed),10/7(Thu),<br>16/7(Wed), 17/7(Thu),23/7(Wed),<br>24/7(Thu),30/7(Wed),31/7(Thu)        | 13:30-15:00                                     | 12 sessions |
| Weeks 3-7 | IB Yr13 Chem /<br>GCE AL Chem | 12/7(Sat), 19/7(Sat), 26/7(Sat)<br>12/7(Sat), 19/7(Sat), 26/7(Sat)<br>2/8(Sat), 9/8(Sat)  | ← 13:00-14:30<br>← 16:30-18:00<br>← 16:30-18:00 | 8 sessions  |
| Weeks 2-7 | IB Yr13 Bio /<br>GCE AL Bio   | 2/7(Wed),3/7(Thu),9/7(Wed)<br>10/7(Thu),16/7(Wed),17/7(Thu)<br>23/7(Wed),24/7(Thu),30/7(Wed)<br>31/7(Thu),6/8(Wed), 7/8(Thu)                | 14:30-16:00                                     | 12 sessions |

# IB / GCE (A-levels)

- Week 1 23 - 28 Jun, 2025
- Week 2 30 - 5 Jul, 2025
- Week 3 7 - 12 Jul, 2025
- Week 4 14 - 18 Jul, 2025
- Week 5 21 - 26 Jul, 2025
- Week 6 28 Jul - 2 Aug, 2025
- Week 7 4 - 9 Aug, 2025
- Week 8 11 - 16 Aug, 2025

## English Language & Literature

HK\$720 per session (1.5hrs)

|           |   |   |             |            |
|-----------|---|---|-------------|------------|
| Weeks 5-6 | IB English A: Language and Literature (Paper 1) | 22/7 (Tue), 24/7 (Thu), 26/7 (Sat)<br>29/7 (Tue), 31/7 (Thu), 2/8 (Sat) | 11:30-13:00 | 6 sessions |
| Weeks 5-6 | IB English B                                    | 22/7 (Tue), 24/7 (Thu), 26/7 (Sat)<br>29/7 (Tue), 31/7 (Thu), 2/8 (Sat) | 15:00-16:30 | 6 sessions |

## Economics

HK\$710 per session (1.5hrs)

|           |                            |  |             |             |
|-----------|----------------------------|--|-------------|-------------|
| Weeks 2-8 | IB Yr 12 Econ/ GCE AS Econ | 30/6 (Mon), 2/7 (Wed), 7/7 (Mon),<br>9/7 (Wed), 14/7 (Mon), 16/7 (Wed),<br>21/7 (Mon), 28/7 (Mon), 30/7 (Wed),<br>4/8 (Mon), 6/8 (Wed), 11/8 (Mon) | 14:30-16:00 | 12 sessions |
| Weeks 2-7 | IB Yr 13 Econ/ GCE AL Econ | 2/7 (Wed), 4/7 (Fri), 9/7 (Wed), 11/7 (Fri),<br>16/7 (Wed), 18/7 (Fri), 23/7 (Wed),<br>25/7 (Fri), 30/7 (Wed), 1/8 (Fri), 6/8 (Wed),<br>8/8 (Fri)  | 17:30-19:00 | 12 sessions |

## Computer Science

HK\$710 per session (1.5hrs)



|           |                                     |  |             |             |
|-----------|-------------------------------------|--|-------------|-------------|
| Weeks 2-6 | IB / GCE (A-level) Computer Science | 4/7 (Fri), 5/7 (Sat), 11/7 (Fri),<br>12/7 (Sat), 18/7 (Fri),<br>19/7 (Sat), 18/7 (Fri),<br>19/7 (Sat), 25/7 (Fri),<br>26/7 (Sat), 1/8 (Fri), 2/8 (Sat) | 14:00-15:30 | 12 sessions |
|-----------|-------------------------------------|--|-------------|-------------|

- We reserve the right to change the schedule or the teacher before the classes are formed without prior notice.
- All of the above-mentioned classes will be in small groups of 2-8 students.

○ For classes of other IB/ GCE levels or subjects not listed here, please contact us for arrangement.

# Congratulations

## to our **TOP** students!!

|        |  |         |                                 |                                    |  |
|--------|--|---------|---------------------------------|------------------------------------|--|
| GCSE   | Mathematics<br>English Language<br>English Literature<br>Religious Studies<br>Geography                      | Kelvin  | A*<br>A*<br>A*<br>A*<br>A*      | The Oratory School, UK             |   |
| I/GCSE | Biology<br>Chemistry<br>Physics<br>Mathematics<br>Computer Science<br>English Language<br>English Literature | Marcus  | A*<br>A<br>A*<br>A*<br>A*<br>A* | Oundle School, UK                  |  |
| I/GCSE | Computer Science<br>A. Math<br>Physics   | Wilson  | A*<br>A*<br>A*                  | Yew Chung International School, HK |  |
| GCE    | Physics<br>Chemistry<br>Biology<br>Mathematics   | Jasmine | A*<br>A*<br>A*<br>A*            | Concord College, UK                |  |
| IB     | Chinese  | Melissa | 7                               | International College Hong Kong    |  |
| IB     | Chinese  | W.I.    | 7                               | Sha Tin College                    |  |

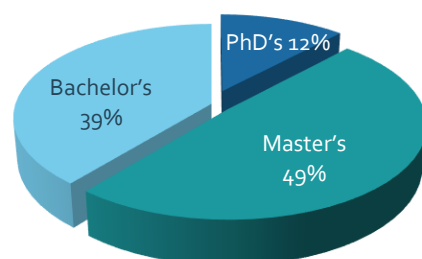
*Nicholas*  -> HKU (Medicine)  
*Jasmine*  -> CUHK (Medicine)  
*Kathy*  -> University of St Andrews (Medicine)  
*Bennett*  -> Trinity College Dublin (Medicine)  
*Sherman*  -> UCL (Psychology & Language Sciences)  
*Trevor*  -> University of Chicago  
*Michelle*  -> Durham University (Psychology)

**More excellent results here:**

<https://asquare.edu.hk/our-students/outstanding-achievements/>

# Teacher Profiles

- \* **Sunny, Mathematics/ Physics Teacher** (MSc in Electrical and Electronic Engineering from Imperial College London, UK)
- \* **Chi Lung, Mathematics/ Science Teacher** (BSc in Chemistry from HKU)
- \* **LC Sir, Biology Teacher** (BSc in Biology from HKUST)
- \* **Sukriti, Biology/Chemistry/English Language teacher** (BSc with first class honours in Biomedical Sciences from HKU)
- \* **Isaac, Mathematics/ Physics Teacher** (MSc in Applied Statistics from Sheffield Hallam University; Master's degree in Statistics and Bachelor's degree in Physics (minor in Mathematics) from HKU)
- \* **Dr. Kristy, Chemistry/Biology Teacher** (PhD in Environmental Science and BSc in Biotechnology from HKUST)
- \* **Christine, Computer Science Teacher** (MSc in Software, Systems and Information Engineering from the University of Sheffield; BA in Computer Science from the U.S.)
- \* **Michael Dorrell, English Language/ Literature Teacher** (BSc First Class Honours and PhD degrees from the UK)
- \* **Charmaine, English Language/ Literature Teacher** (MA in Gender, Literature and Modernity from the University of Warwick, UK; BA in English and English Literature from CUHK)
- \* **John Ng, Spanish Teacher** (Degree in Law from Venezuela)
- \* **Snowy, Chinese & Putonghua Teacher** (MA in Putonghua Education from CUHK)
- \* **Samuel, Economics Teacher** (MA in Economics and BSc in Economics and Finance from the U.S.)
- \* **Jerry, Business Studies Teacher** (MPhil in Economics from HKBU; BSSc in Economics (minor in Business Administration) from CUHK)
- \* **Jason, Accounting Teacher** (MBA from HKUST; BBA First Class Honours from CUHK)
- \* **Dr Andrew, Geography/ Religious Studies/ Philosophy Teacher** (PhD in Theology and Religious Studies from the University of Glasgow, UK; MA in Philosophy from Durham University, UK; BA in Philosophy from CUHK)
- \* **Louis, Psychology Teacher** (Master of Counselling from Monash University; BSc in Psychology from the U.S.)
- \* **Venus, Music Teacher** (Bachelor of Music from Kingston University London, UK)

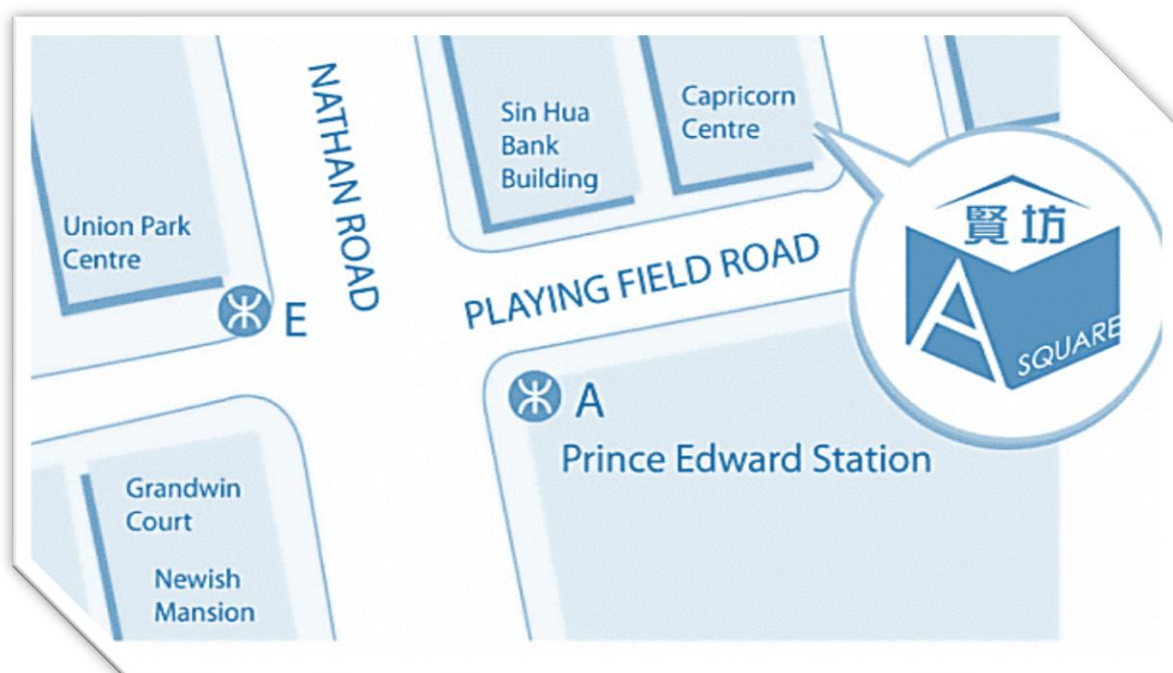




- ❖ We specialize in IGCSE/ GCSE/ GCE/ IB preparatory courses for students studying in Hong Kong or overseas.
- ❖ We provide one-on-one and private group tuition as well as Regular Courses during the school year and Seasonal Courses (e.g. Easter Courses, Summer Courses and Christmas Courses.)
- ❖ We offer tuition for subjects such as Mathematics, Physics, Biology, Chemistry, Economics, Business Studies, Computer Science, Design and Technology, Geography, History, Psychology, Philosophy, Chinese, French, German, Spanish, English Language and Literature, etc.

## ***Individual and Private Group Tutorials***

We also offer **individual and private group tutorials** in various subjects at reasonable rates for students following **GCSE/ IGCSE/ GCE/ IAL/ IB/ AP/ SAT/ HKDSE** and **IELTS** curricula.



**5/F Capricorn Centre, 155 Sai Yeung Choi Street North, MongKok, Kowloon.**  
**(Prince Edward MTR Station Exit A; building entrance on Playing Field Road)**  
**School Registration No. 585386**



9856 4341



2380 0868



[www.asquare.edu.hk](http://www.asquare.edu.hk)  
[info@asquare.edu.hk](mailto:info@asquare.edu.hk)